



DNC Series ISO6431 Standard Cylinder



DNC-60x100



DNC-60x100

Ordering Code



- DNC: Standard Type
- DNCD: Double shaft type
- DNCJ: Double shaft type, adjustable stroke type
- DNCS: Swivelling type
- DNT:Economic Type
- DNTD: Double shaft type
- DNTJ: Double shaft type, adjustable stroke type
- DNTS: Swivelling type

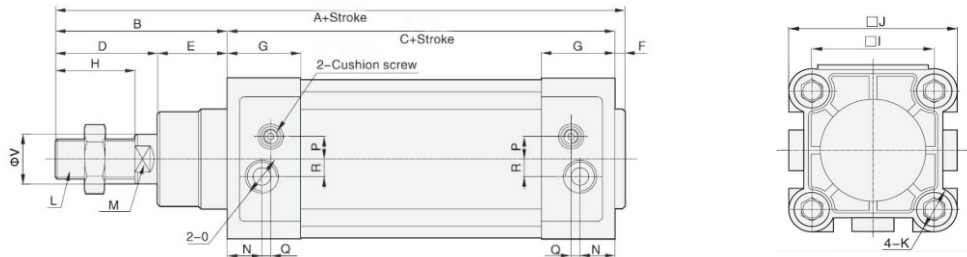
Bore Size
φ32-125mm

Stroke
0-2000mm

Blank: No Cushion
PPV: With Cushion

Blank: No magnet
S:With magnet

Dimensions



Bore/sign	A	B	C	D	E	F	G	H	I	J
32	146	48	94	30	18	4	25	22	32.5	45
40	163	54	105	32.5	21.5	4	29.5	24	36	54
50	179	69	106	41	28	4	29.5	32	46.5	64
63	194	69	121	40.5	28.5	4	35.5	32	56.5	75
80	218	86	128	51.3	34.7	4	36	40	72	93
100	233	91	138	53	38	4	39	40	89	110

Bore/sign	K	L	N	O	P	Q	R	V	M
32	M6	M10x1.25	15.6	G1/8	7	3	6	12	10
40	M6	M12x1.25	14	G1/4	7	9.6	4.5	16	13
50	M8	M16x1.5	14	G1/4	9	3.5	7	20	17
63	M8	M16x1.5	17	G3/8	9.7	6.6	8.3	20	17
80	M10	M20x1.5	16.4	G3/8	12.1	10.5	8.3	25	22
100	M10	M20x1.5	18.8	G1/2	12.1	8	8.3	25	22

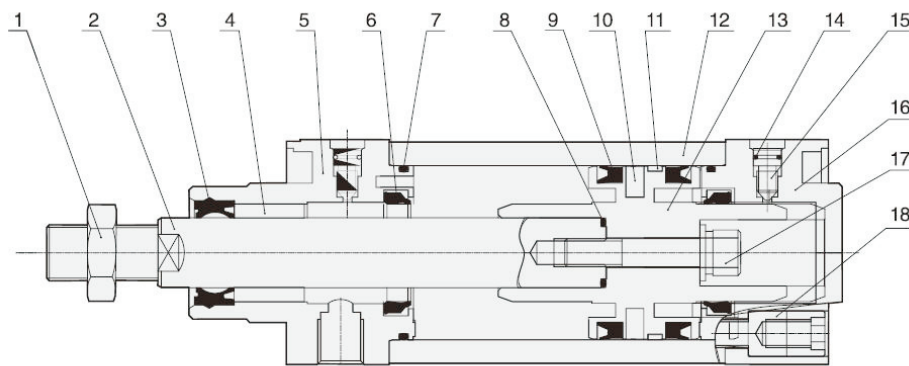
DNC Series ISO6431 Standard Cylinder

Specifications

Bore Size(mm)	32	40	50	63	80	100
Acting Type	Double acting					
Working Medium	clean air(25µmfiltration)					
Mounting Type	FA FB CA CB LB CR					
Rod End Fitting Type	FY FI FF FB					
Range Of Working Pressure(bar)	1-9					
Guaranteed Pressure(bar)	13.5					
Working Temperature(°C)	-5-70					
Speed Range(mm/s)	50-800					
Cushion Type						
Cushion Stroke(mm)	24			32		
Port Size	G1/8	G1/4		G3/8		G1/2

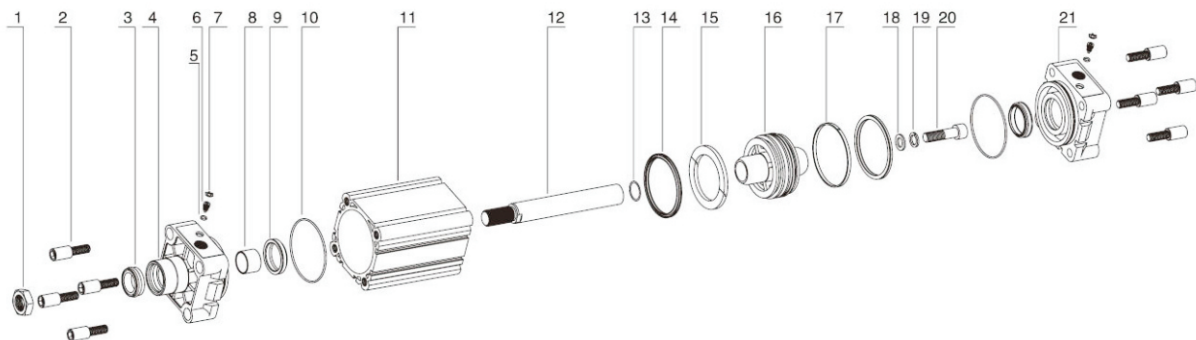
Cylinder

Internal structure



NO	Designation
1	nut
2	piston rod
3	piston rod seal
4	self lubricating bearing
5	head cover
6	cushion seal
7	cover O-ring
8	piston rod O-ring
9	piston seal
10	magnet(optional)
11	wear ring
12	barrel
13	piston
14	O-ring
15	cushion needle
16	rear cover
17	hexagon screw
18	profile bolt

DNC cylinder kits



NO	1	2	3	4	5	6	7	8	9	10	11
Designation	Nut	cover screw	Piston rod seal	head cover	O-ring	Adjustable Screw	Block slip	Self lubrication bearing	Cushion ring	O-ring	Barrel
NO	12	13	14	15	16	17	18	19	20	21	
Designation	Piston rod	O-ring	Piston seal	magnet	piston	wearing ring	Plain cushion	spring cushion	screw	rear cover	



SI Series Standard Cylinder



SI-60x100



SID-60x100

Cylinder

Ordering Code

SI

63

x

50

S

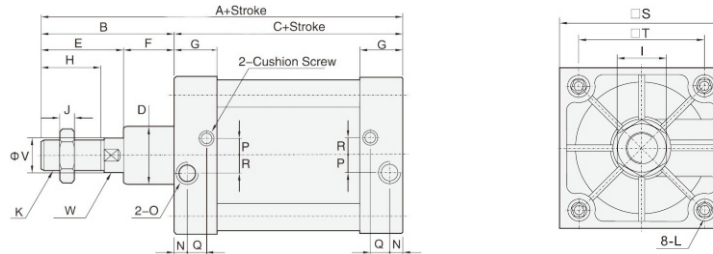
SI: Standard Type
 SID: Double shaft type
 SIJ: Double shaft type,
 adjustable stroke type
 SIS: Swivelling type

Bore Size
 ϕ 32-125mm

Stroke
 0-2000mm

Blank: No magnet
 S: With magnet

Dimensions



Bore/sign	A	B	C	D	E	F	G	H	I	J	K
32	142	48	94	30	32	16	27.5	22	17	6	M10x1.25
40	159	54	105	35	36	18	29	24	19	7	M12x1.25
50	175	69	106	40	44	25	30	32	24	8	M16x1.5
63	190	69	121	45	44	25	31	32	24	8	M16x1.5
80	214	86	128	45	56	30	35	40	30	10	M20x1.5
100	229	91	138	55	59	32	36	40	30	10	M20x1.5
125	279	119	160	60	74	45	46	54	41	13.5	M27x2
160	332	152	180	66	94	58	50	72	55	18	M36x2
200	347	167	180	75	110	67	50	72	55	18	M36x2

Bore/sign	L	N	O	P	Q	R	S	T	V	M
32	M6	13.5	G1/8	4	7.5	7	47	32.5	12	10
40	M6	16	G1/4	6	9.5	9	53	38	16	13
50	M8	18.5	G1/4	8.5	6.7	9	65	46.5	20	17
63	M8	19	G3/8	6	7.7	9	75	56.5	20	17
80	M10	19	G3/8	10	5	13.5	95	72	25	22
100	M10	18	G1/2	12.5	10	14.5	115	89	25	22
125	M12	23	G1/2	14	12	14	140	110	32	27
160	M16	25	G3/4	15	12	20	180	140	40	36
200	M16	25	G3/4	15	12	20	220	175	40	36

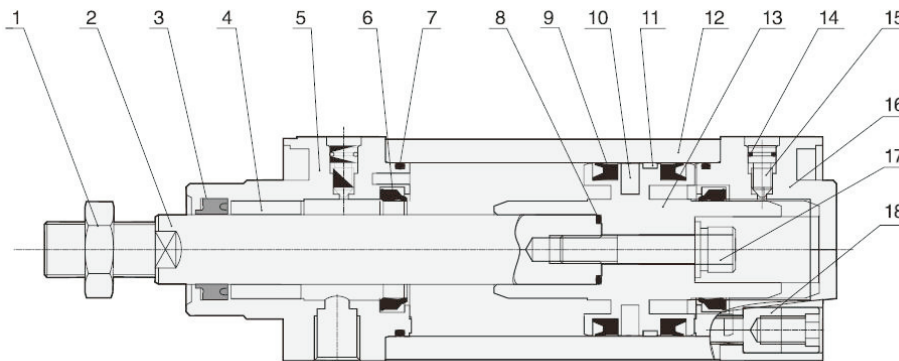
SI Series Standard Cylinder

Specifications

Bore Size(mm)	32	40	50	63	80	100	125	160	200
Acting Type	Double acting								
Working Medium	clean air(25µmfiltration)								
Mounting Type	VFA VFB VCA VCB VCR VLB								
Rod End Fitting Type	FY FI FF FB								
Range Of Working Pressure(bar)	1-9.0								
Guaranteed Pressure(bar)	13.5								
Working Temperature(°C)	-5-70								
Speed Range(mm/s)	50-800								
Cushion Type	Adjustable cushion								
Cushion Stroke(mm)					24		32		
Port Size	G1/8		G1/4		G3/8		G1/2		G3/4

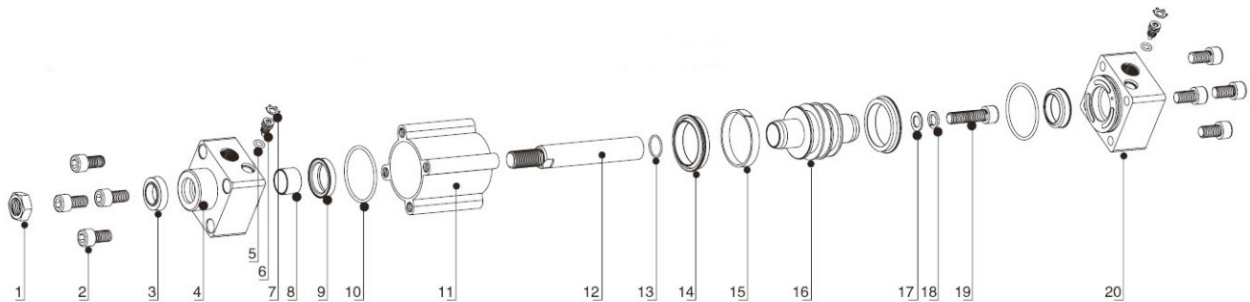
Cylinder

Internal structure



NO	Designation
1	Nut
2	Piston Rod
3	Piston rod seal
4	Self Lubricating bearing
5	Head Cover
6	cushion seal
7	Cover O-ring
8	Piston Rod O-ring
9	Piston Seal
10	Magnet(optional)
11	Wear ring
12	Barrel
13	Piston
14	O-ring
15	Cushion needle
16	Rear cover
17	Hexagon Screw
18	Profile Bolt

SI cyinder kits



NO	1	2	3	4	5	6	7	8	9	10	11
Designation	Nut	cover screw	Piston rod seal	head cover	O-ring	Adjustable Screw	Block slip	Self lubrication bearing	Cushion ring	O-ring	Barrel
NO	12	13	14	15	16	17	18	19	20		
Designation	Piston rod	O-ring	Piston seal	Wear ring	piston	Plain cushion	spring cushion	screw	rear cover		



SC/SU Series Standard Cylinder



SC-63x100



SCD-63x100



SU-50x50

Cylinder

Ordering Code

SC

63

x

50

S

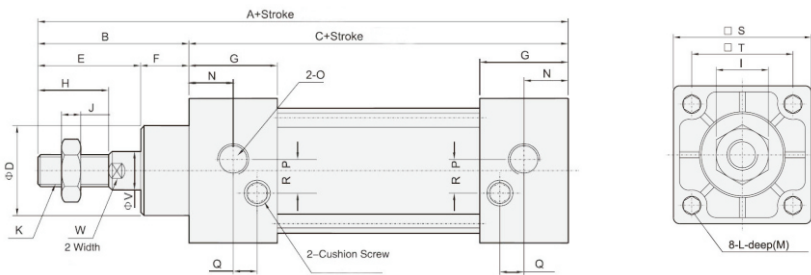
- SC: Tie Rod Type
- SCD: Double shaft type
- SCJ: Double shaft type, adjustable stroke type
- SCS: Swivelling type
- SU: No Tie Rod Type
- SUD: Double shaft type
- SUJ: Double shaft type, adjustable stroke type
- SUS: Swivelling type

Bore Size
φ32-100mm

Stroke
0-2000mm

Blank: No magnet
S: With magnet

Dimensions



Bore/sign	A	B	C	D	E	F	G	H	I	J
32	146	48	94	30	18	4	25	22	32.5	45
40	163	54	105	32.5	21.5	4	29.5	24	36	54
50	179	69	106	41	28	4	29.5	32	46.5	64
63	194	69	121	40.5	28.5	4	35.5	32	56.5	75
80	218	86	128	51.3	34.7	4	36	40	72	93
100	233	91	138	53	38	4	39	40	89	110

Bore/sign	K	L	N	O	P	Q	R	V	M
32	M6	M10x1.25	15.6	G1/8	7	3	6	12	10
40	M6	M12x1.25	14	G1/4	7	9.6	4.5	16	13
50	M8	M16x1.5	14	G1/4	9	3.5	7	20	17
63	M8	M16x1.5	17	G3/8	9.7	6.6	8.3	20	17
80	M10	M20x1.5	16.4	G3/8	12.1	10.5	8.3	25	22
100	M10	M20x1.5	18.8	G1/2	12.1	8	8.3	25	22

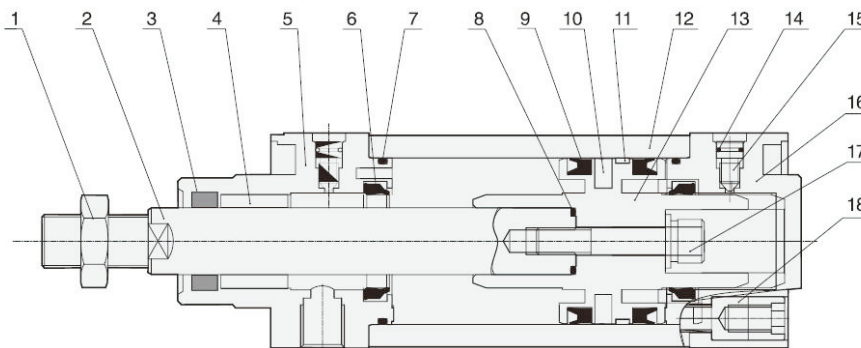
SC/SU Series Standard Cylinder

Specifications

Bore Size(mm)	32	40	50	63	80	100	125	160	200
Acting Type	Double acting								
Working Medium	clean air(25µmfiltration)								
Mounting Type	TFA TFB TCA TCB TLB TTC TTC-M								
Rod End Fitting Type	VY VI VF VB								
Range Of Working Pressure(bar)	1-9.0								
Guaranteed Pressure(bar)	13.5								
Working Temperature(°C)	-5-70								
Speed Range(mm/s)	50-800								
Cushion Type	Adjustable cushion								
Cushion Stroke(mm)	24				32				
Port Size	G1/8	G1/4		G3/8		G1/2		G3/4	

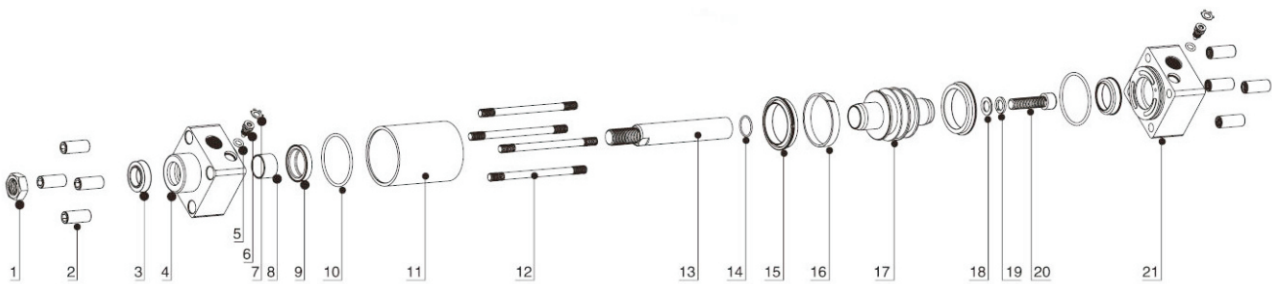
Cylinder

Internal structure



NO	Designation
1	Nut
2	Piston Rod
3	Piston rod seal
4	Self Lubricating bearing
5	Head Cover
6	cushion seal
7	Cover O-ring
8	Piston Rod O-ring
9	Piston Seal
10	Magnet(optional)
11	Wear ring
12	Barrel
13	Piston
14	O-ring
15	Cushion needle
16	Rear cover
17	Hexagon Screw
18	Tie rod nut

SC cyinder kits



NO	1	2	3	4	5	6	7	8	9	10	11
Designation	Nut	Tie-ord nut	Piston rod seal	Head cover	O-ring	Adjustable screw	Block slip	Self lubrication bearing	Cushion ring	O-ring	Barrel
NO	12	13	14	15	16	17	18	19	20	21	
Designation	Tie rod	Piston rod	O-ring	Piston seal	wearing ring	piston	Plain cushion	spring cushion	Hexagon nut	Rear cover	

ARC Series Cylinder

Ordering Code

ARC

ARC: Standard Type
 ARCD: Double shaft type
 ARCJ: Double shaft type, adjustable stroke type
 ARCS: Single acting and spring extend
 ARCT: Single acting and spring return

20

Bore Size
 $\phi 12-25\text{mm}$

x

50

Stroke
 0-1000mm

Blank

Blank: Swivelling Tail
 U: Flat Tail
 CM: Round Tail

S

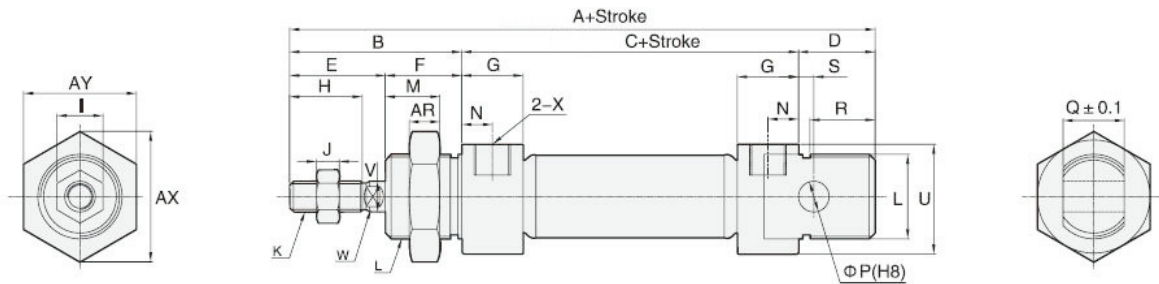
Blank: No magnet
 S: With magnet



ARC-25x50

Cylinder

Dimensions



Bore/sign	A	B	C	D	E	F	G	H	I	J	K	L
12	105	38	50	17	21	17	10.5	14.5	10	5	M6	M16*1.5
16	112	39	56	17	22	17	11	14.5	10	5	M6	M16*1.5
20	133	45	68	20	25	20	16	18	14	6	M8	M22*1.5
25	142	52	68	22	30	22	16	20	17	6	M10*1.25	M22*1.5

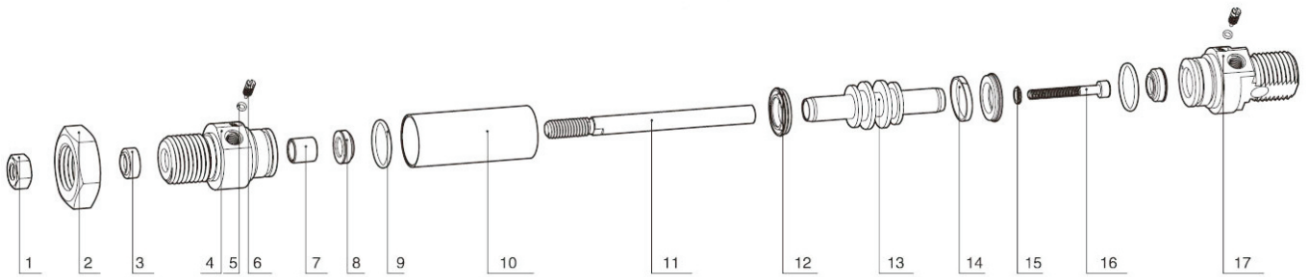
Bore/sign	M	N	P	Q	R	S	U	V	W	X	AR	AX	AY
12	12	8	6	12	15	3	18.3	6	5	M5	8	27	24
16	12	6	6	12	13.5	4	21	6	5	M5	8	27	24
20	15	8	8	16	17	3	28.6	8	6	G1/8	10	35	31
25	15	8	8	16	18.5	3.5	28.6	10	8	G1/8	10	35	31

ARC Series Standard Cylinder

Specifications

Bore Size(mm)	12	16	20	25
Acting Type				
Working Medium	clean air(25µmfiltration)			
Mounting Type	(Basic type) IFA ISDB ILB			
Range Of Working Pressure(bar)	1-9.0			
Guaranteed Pressure(bar)	13.5			
Working Temperature(°C)	0-80(dry air-20)			
Speed Range(mm/s)	10-1000			
Cushion Type	16mm-25mm bore are with adjustable cushion,other size cushion is optional			
Cushion Stroke(mm)	IAS:stainless steel barrel.			
Port Size	M5x0.8		G1/8	

ARC cyinder kits



NO	1	2	3	4	5	6	7	8	9	10	11
Designation	Nut	Tie-ord nut	Piston rod seal	Head cover	O-ring	Adjustable screw	Block slip	Self lubrication bearing	Cushion ring	O-ring	Barrel
NO	12	13	14	15	16	17	18	19	20	21	
Designation	Tie rod	Piston rod	O-ring	Piston seal	wearing ring	piston	Plain cushion	spring cushion	Hexagon nut	Rear cover	

MAL Series Standard Cylinder

Ordering Code

MA — L — 20 × 50 — — S

MA: Standard Type
 MALD: Double shaft type
 MALJ: Double shaft type, adjustable stroke type
 MALS: Single acting and spring extend
 MALT: Single acting and spring return

L: Aluminium Barrel
 S: S.S Barrel

Bore Size
 φ16-40mm

Stroke
 0-1000mm

Blank: Swivelling Tail
 U: Flat Tail
 CM: Round Tail

Blank: No magnet
 S: With magnet



MAL-60x100-U



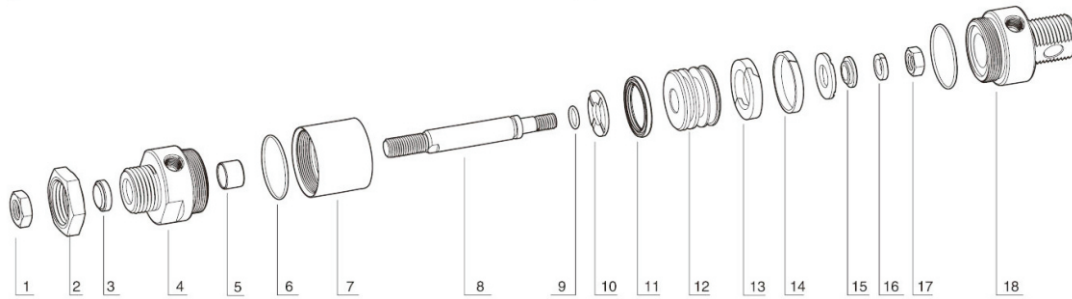
MAL-20x100

MAL Series Mini Cylinder

Specifications

Bore Size(mm)		16	20	25	32	40
Acting Type						
Working Medium		clean air(25µfiltration)				
Mounting Type		(Basic type) RLB RFA RSDB				
Working pressure(bar)		1-9.0				
Guaranteed Pressure(bar)		13.5				
Working Temperature(°C)		-5-70				
Speed Range(mm/s)		50-800				
Cushion Type	Standard type cushion type	Anti-bump cushion				
		Adjustable cushion				
Port Size		M5x0.8			G1/8	

MAL cylinder kits



NO	1	2	3	4	5	6	7	8	9
Designation	Nut	Nut	Piston rod seal	Head cover	Self lubrication bearing	O-ring	Bamel	Piston rod	O-ring
NO	10	11	12	13	14	15	16	17	18
Designation	Anti-bump cushion	piston seal	piston	magret	wear rng	Impact gasket	spring cushion	nut	rear dover

SJ Series Mini Cylinder

Ordering Code

SJ	—	20	×	50	—		—	S	
SJ: Standard Type SJS: Single acting and spring extend SJT: Single acting and spring return		Bore Size φ6-16mm		Stroke 0-200mm		Port Type in the rear cover Blank: Vertical R: Horizontal		Blank: No magnet S: With magnet	
		SJ-16x75						SJS-16x75	

SJ Series Mini Cylinder

Specifications

Bore/sign	6	10	16
Working Medium	Air		
Motion Pattern	Double action/Single Action Extrusion type/Single Action Drawing-in Type		
Ensured Pressure Resistance	1.05Mpa(10.5kgf/cm ²)		
Max.pressure	0.7Mpa(7.1kgf/cm ²)		
Min.pressure	0.25Mpa(2.5kgf/cm ²)	0.15Mpa(1.5kgf/cm ²)	
Operating Temperature Range	-10~+70°C		
Operating Speed Range	50~750mm/s		
Buffering	Both side Rubber buffer(Stander)		
Margin of Stroke Error(mm)	+1.0 0mm		
Port size	M5x0.8		

SJ cylinder kits

Bore(mm)	A	B	C	D	F	GA	GB	H	HM	NA	NB	Ndh8	NN	S	T	Z
6	15	12	14	3	8	14.5	-	28	M3X0.5	16	7	6	M6X1.0	49	3	77
10	15	12	14	4	8	8	5	28	M4X0.7	12.5	9.5	8	M8X1.0	46	-	74
16	15	18	20	5	8	8	5	28	M5X0.8	12.5	9.5	10	M10X1.0	47	-	75

SM Series Mini Cylinder

Ordering Code



SM-40x50S



SM-25x100

SM

20

x

50

S

SM: Standard Type
SMS: Single acting and spring extend
SMT: Single acting and spring return

Bore Size
φ20-40mm

Stroke
0-1000mm

Blank: Rubber Cushion
A: Air Cushion

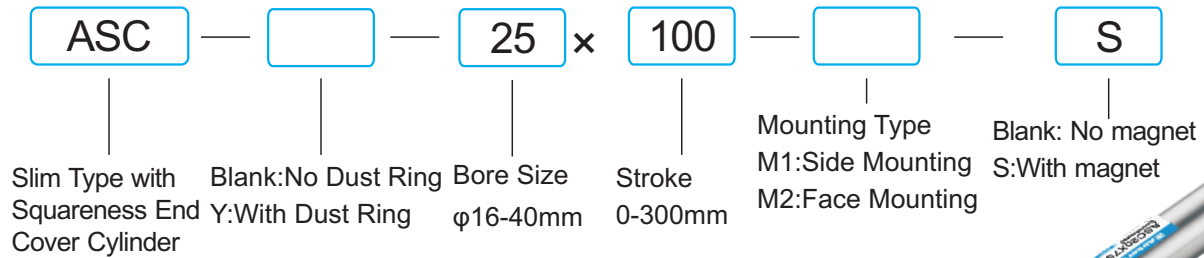
Blank: No magnet
S: With magnet

Specifications

Bore Size(mm)	20	25	32	40
Working medium	Clean Air(40μ filtration)			
Acting type	Double acting			
Working pressure(bar)	0.5-10			
Working temperature(°C)	-10~70			
Cushion type	Adjustable cushion(optional)			
Speed range (mm/s)	Min:10		Max:1000	

ASC Series Mini Cylinder

Ordering Code



ASC-20x75

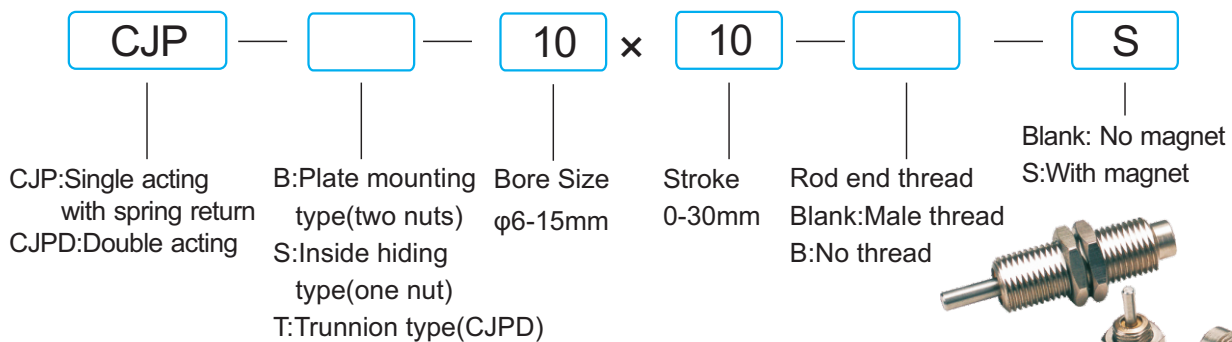
Cylinder

Specifications

Bore size(mm)	16	20	25	32	40	50	63
Acting Type	Double Acting						
Working Medium	Clean air(25μ filtration)						
Mounting type	Foot Type		Flange Type		Single U-ring Type		
Range of working pressure(Bar)	9			0.5~7			
Guaranteed pressure(Bar)	13			10			
Working temperature(°C)	0-70						
Speed range(mm/s)	30-700			30-500			
Cushion type	Fixed(Rubber Cushion)			Adjustable(Stroke 15mm)			
Oil supply	No Change						
Port Size	1/8			1/4			

CJP Series Mini Cylinder

Ordering Code



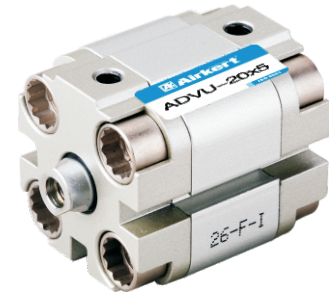
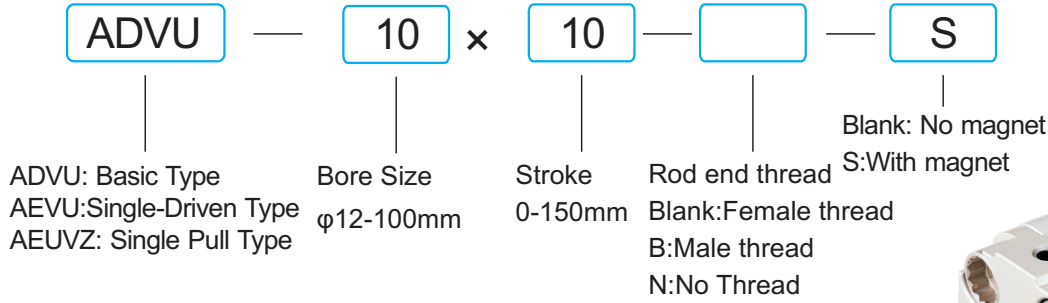
CJP-10x15

Specifications

Bore size(mm)	6	10	15
Working medium	Clean Air(25μ filtration)		
Acting type	Single acting spring return/Double acting		
Guaranteed pressure(Bar)	10.5		
Max. Working pressure(Bar)	7		
Min. Working pressure(Bar)	2	1.5	
SP	1.2	0.6	
SPD			
Working temperature(°C)	5-60		
Cushion	none(SP), both ends cushion(SP)		
Stroke Tolerance	+1.0 0		
Lubrication	Not required		
Port Size	M5x0.8		

ADVU Series Mini Cylinder

Ordering Code



ADVU-20x5

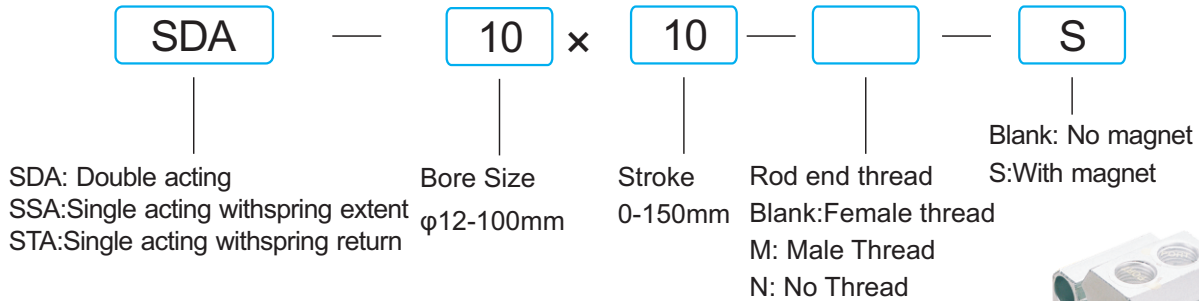
Cylinder

Specifications

Bore size(mm)		12	16	20	25	32	40	50	63	80	100	
Acting type		Double Acting										
Working medium		Single acting: With spring return/With spring extent Clean air(25μfiltration)										
Working pressure(Bar)	Double acting	1-9										
	Single acting	2-9										
Max.working pressure(Bar)		15										
Working temperature(°C)		-5~70										
Speed range (mm/s)	Double acting	30-500			30-350			30-250				
	Single acting	30-500						30-350				
Cushion type		Fixed cushion										
Port Size(mm)		M5X0.8			G1/8			G1/4		G3/8		

SDA Series Mini Cylinder

Ordering Code



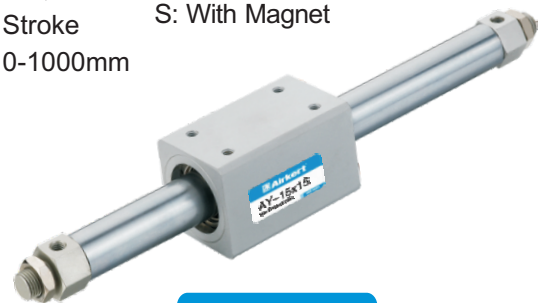
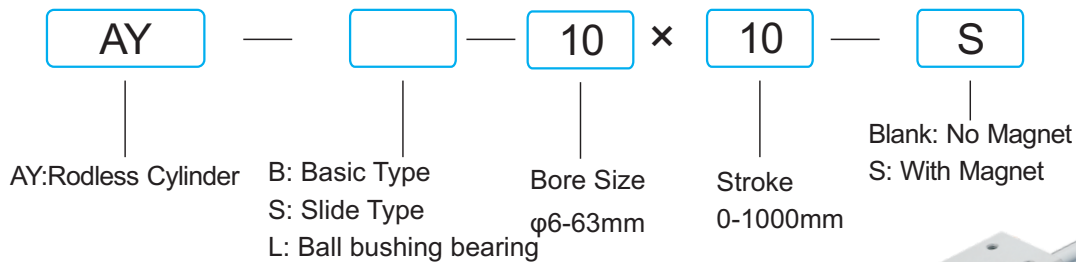
SD-20x15

Specifications

Bore size(mm)		12	16	20	25	32	40	50	63	80	100		
Acting type		Double Acting											
Working medium		Single acting: With spring return/With spring extent Clean air(25μfiltration)											
Working pressure(Bar)	Double acting	1-9											
	Single acting	2-9											
Max.working pressure(Bar)		13.5											
Working temperature(°C)		-5~70											
Speed range (mm/s)	Double acting	30-500				30-350				30-250			
	Single acting	100-500											
Cushion type		Fixed cushion											
Port Size(mm)		M5X0.8			G1/8			G1/4			G3/8		

AY Series Mini Cylinder

Ordering Code



AY-15x15

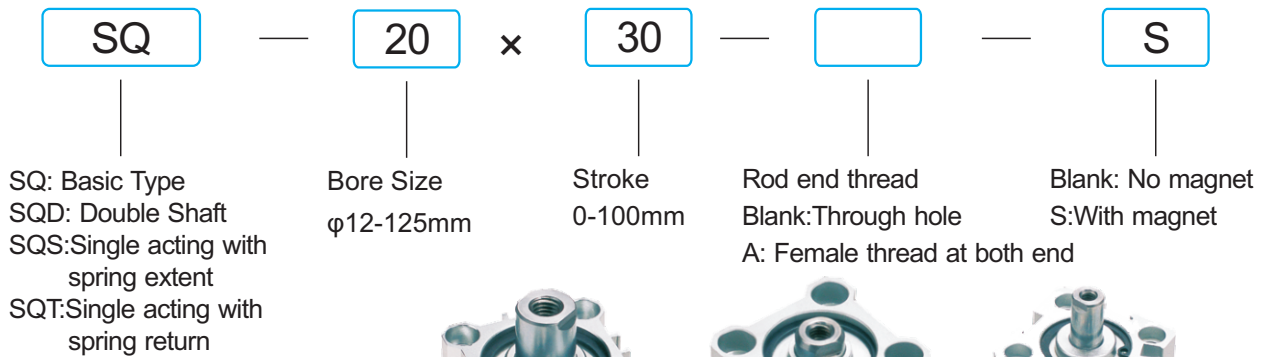
AY Series Mini Cylinder

Specifications

Bore (mm)	10	15	25	32	40	50	63
Acting type	Double acting						
Working medium	Clean air(25 micron filtration)						
Working pressure(Bar)	1.8-7.1						
Guaranteed pressure(Bar)	10.5						
Working temperature(°C)	-5~60						
Speed range(mm/s)	50~400						
Cushion	With rubber cushion at both sides						
Lubrication	Not Required						0.3°
Port Size	M5X0.8			G1/8		G1/4	

SQ Series Mini Cylinder

Ordering Code



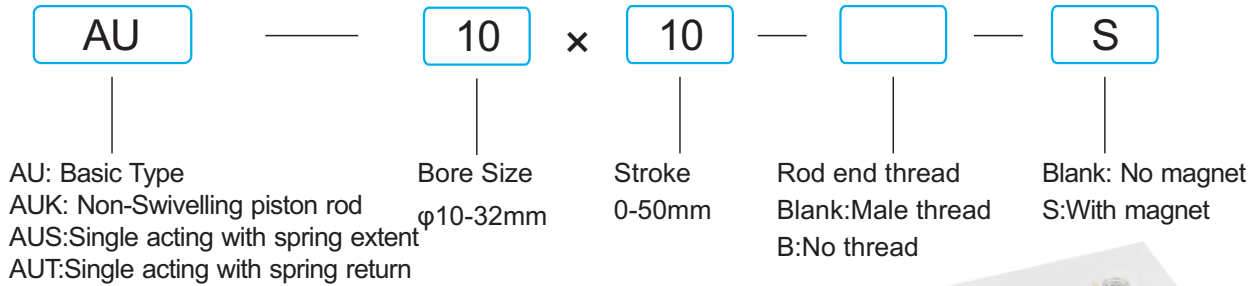
SQ-25x10

Specifications

Bore size(mm)	12	16	20	25	32	40	50	63	80	100	125
Working medium	Clean air(25µfiltration)										
Acting type	Double Acting/Single acting spring seturn/Single acting spring extent										
Max.working pressure(Bar)	15										
Working pressure(Bar)	1~10										
Working temperature(°C)	5~60										
Piston rod thread type	Female thread(Stander).Male thread(Optional)										
Cushion	None										
Tolerance of Stroke	+1.0 0										
Lubrication	Not Required										
Installation(On barrel ends)	Through hole(Standard),female thread on both sides(Optional)										
Port Size(mm ㉞)	M5X0.8			G1/8			G1/4		G3/8		

AU Series Mini Cylinder

Ordering Code



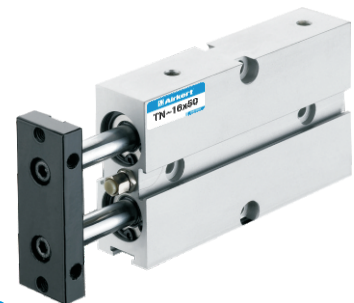
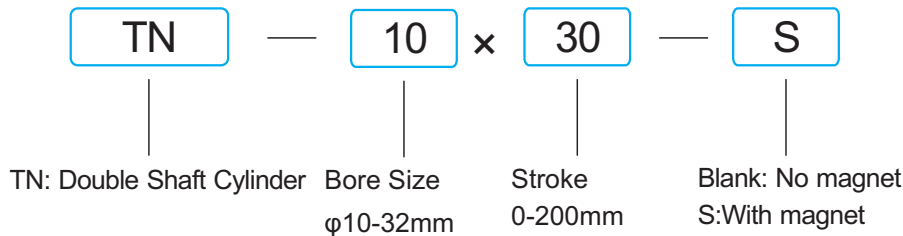
AU-16x15

Specifications

Bore (mm)	6	10	16	20	25	32
Acting type	Double Acting/Single acting spring setum/Single acting spring extent					
Guaranteed pressure(Bar)	10					
Working pressure(Bar)	7					
Working temperature(°C)	5-60					
Cushion type	Rubber cushion					
Port Size	M5X0.8			G1/8		

TN Series Mini Cylinder

Ordering Code



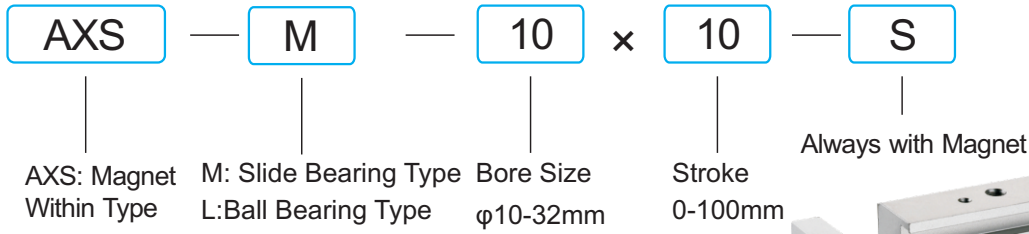
TN-16x15

Specifications

Bore (mm)	10	16	20	25	32
Acting type	Double acting				
Working medium	Clean air(25 micron filtration)				
Working pressure(Bar)	1-9				
Guaranteed pressure(Bar)	13.5				
Working temperature(°C)	-5~70				
Speed range(mm/s)	100~500				
Adjusting stroke (mm)	-10~0				
Cushion type	Adjustable cushion				
Non-rotating accuracy	0.4°		0.3°		
Port Size	M5X0.8			G1/8	

AXS Series Mini Cylinder

Ordering Code



AXS-10x40



Cylinder

Specifications

Bore (mm)		6	10	15	20	25	32
Working Medium		Air					
Acting type		Double Acting					
Guaranteed pressure(Bar)		10.5					
Max.working pressure(Bar)		7					
Min.working pressure(Bar)		1.5	1			0.5	
Working temperature(°C)		5-60					
Cushion		Both Ends Cushion					
Structure		Double Power					
Lubrication		Not Required					
Adjustable cushion		Return Stroke 0~5mm					
Bearing		Slide Bearing type&Ball Bearing type					
No-rotating accuracy	Slide Bearing type	±0.1	±0.15	±0.13	±0.11	±0.1	±0.08
	Ball bushing Bearing type	±0.1	±0.1	±0.07	±0.06	±0.05	±0.04
Port Size		M5X0.8					

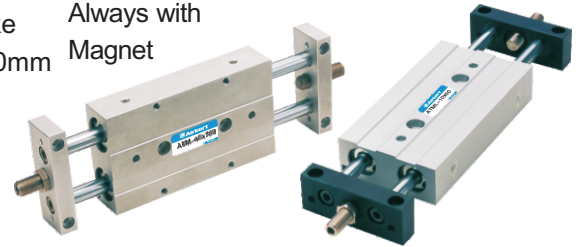
ATM Series Mini Cylinder

Ordering Code

ATM — B — 10 × 10 — S

ATM: Magnet Within Type Sliding Cylinder
 B: Body Fixed Type
 φ10-25mm

Stroke 0-250mm
 Always with Magnet



Cylinder

Specifications

ATM-16x100

Bore (mm)	10	15	20	25
Acting type	Double Acting			
Working Medium	Clean air(25 micron filtration)			
Working temperature(°C)	-5~70			
Working pressure(Bar)	1-9			
Guaranteed pressure(Bar)	13.5			
Speed range(mm/s)	50-200			
Cushion type	No		Shock Absorber	
Oil supply	Not Required			
No rotating accurag	±0.1°		±0.5°	
Port Size	M5X0.8			

MGP Series Mini Cylinder

Ordering Code

MGP — M — 10 × 10 — S

MGP: Magnet Within Type
 Three Shaft cylinder

M: Slide Bearing Type
 L:Ball Bearing Type

Bore Size φ12-100mm

Stroke 0-200mm

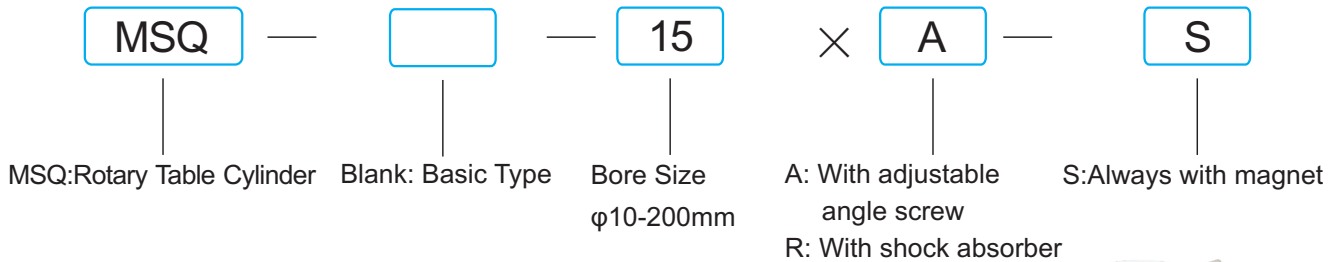
Always with Magnet

Specifications

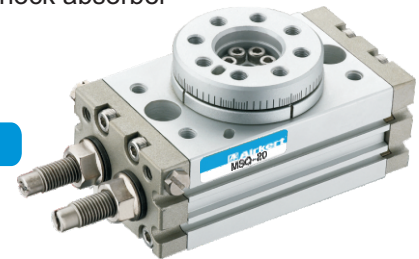
Bore (mm)		12	16	20	25	32	40	50	63	80	100
Guaranteed Pressure(bar)		15.3									
Working Pressure(bar)		1.2~10.2									
Working Temperature(°C)		-10~60									
Piston Speed(mm/s)		50-500					50-400				
Cushion		Rubber Cushion									
Tolerance Of Stroke		+1.5 0									
Beariong		Slide Bearing/ball Bushing Bearing									
Non-rotating Accuracy	Slide Bearing	+0.08°	+0.07°	+0.06°	+0.05°	+0.04°					
	Ball Bushing Bearing	+0.10°	+0.09°	+0.08°	+0.06°	+0.05°					
Port Size		M5X0.8			G1/8		G1/4		G3/8		

MSQ Series Cylinder

Ordering Code



MSQ-20



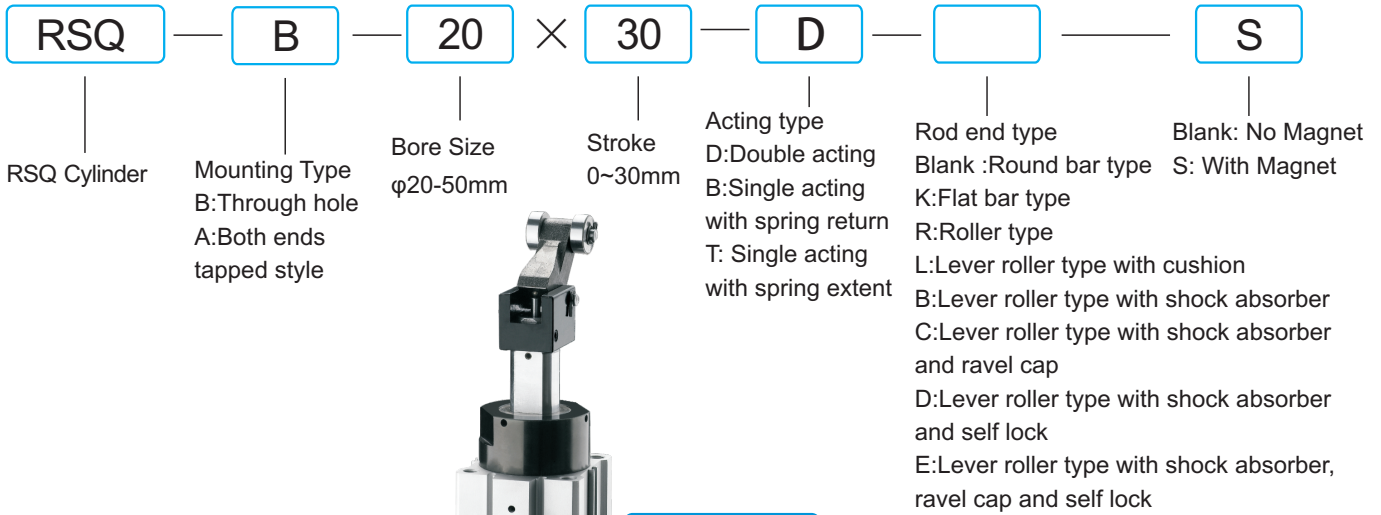
Cylinder

Specifications

Bore (mm)		10	15	25	32	40	50	63
Working medium		Clean air(25 μ filtration)						
Acting type		Double acting						
Max.Working pressure	With adjustable angle screw	10						
	With shock absorber	6						
Min.Working pressure(Bar)		1						
Working temperature(°C)		0-60						
Cushion		Rubber Cushion(Standard) Shock absorber (optional)						
Allowed power	With adjustable angle screw	0.007J	0.025J	0.048J	0.081J	0.24J	0.32J	0.56J
	With shock absorber	0.039J	0.116J	0.116J	0.294J	1.1J	1.6J	2.9J
Angle adjustable range		0-190°						
Max.Rotation abgle		190°						
Steady swing time range		0.2~1.0S/90°			0.2~1.5S/90° _i		0.2~2.0S/90° _i 0.2~2.5S/90° _i	
piston diameter		ϕ 15	ϕ 18	ϕ 21	ϕ 25	ϕ 28	ϕ 32	ϕ 40
Port Size		M5x0.8					ϕ G1/8	

RSQ Series Cylinder

Ordering Code



RSQ60x75

Cylinder

Specifications

Bore (mm)	20	32	40	50
Acting type	Double Acting, Double Acting with Spring, Single Acting Spring Extent			
Rod end type	Round bar/Chamfered /Roller type	Round bar/Chamfered /Roller type/Lever typ		
working Medium	clean air			
Guaranted Pressure(Bar)	15			
Max.Working Pressure(Bar)	10			
Working Temperature	-10~70(Max.is 60 if with magnet)			
Cushion	Both end rubber cushion			
Stroke Tolerance	+1.4mm			
Lubrication	Not required			
Mounting Type	Through h ole,both end female thread			
Port Size	PT1/8"			

MHL Parallel style wide opening air gripper

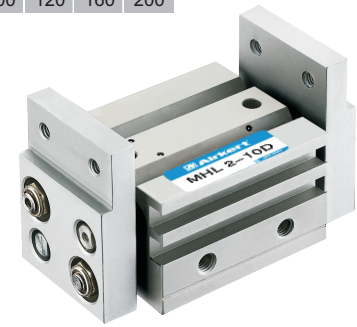
Ordering Code

MHL — **2** — **16** — **D** — — **S**

MHL Cylinder Finger Quantity 2Pcs Bore Size ϕ 10-40mm Acting type D:Double Acting Finger open / Close stroke S: Always with magnet

Bore	ϕ 10	ϕ 16	ϕ 20	ϕ 25	ϕ 32	ϕ 40
Blank	20	30	40	50	70	100
1	40	60	80	100	120	160
2	60	80	100	120	160	200

Cylinder



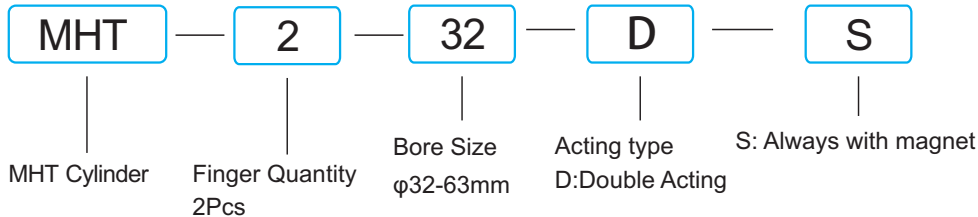
MHL2-10D

Specifications

Bore (mm)	10	16	20	25	32	40
Working Medium	Clean air(25 μ filtration)					
Acting type	Double acting					
Guaranteed Pressure (Bar)	6					
Min.Working Pressure	1.5			1.0		
Working Temperature (°C)	-10~60					
Pepeatability(mm)	\pm 0.1					
Effective gripping force (N) at 5Bar	14	45	74	131	288	396
Port Size	M5x0.8			G1/8		

MHT Angle style wide opening air gripper

Ordering Code



MHT2-32D



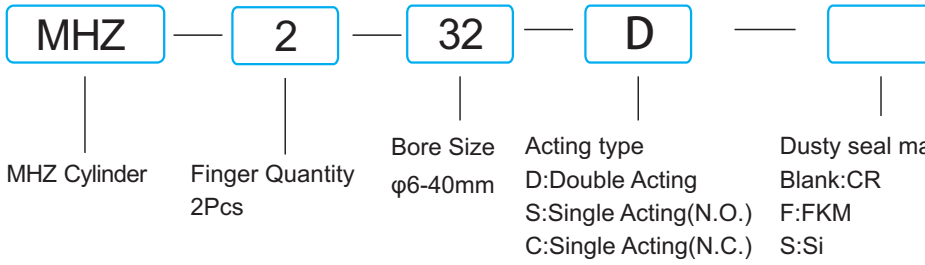
Cylinder

Specifications

Model	MHT2-32D	MHT2-40D	MHT2-50D	MHT2-63D
Bore(mm)	32	40	50	63
Working Medium	Clean air(25μ filtration)			
Acting type	Double acting			
Range of working pressure (Bar)	1-6			
Working Temperature (°C)	5-60			
Lubrication	Not required			
Finger open/close angle	-3~28°	-3~27°	-2~23°	-2~23°
Weight(Kg)	0.8	1.09	1.93	2.8
Effective gripping force(N)	12.4	36.0	63.0	106

MHZ Style air gripper

Ordering Code



MHZ2-32D

Cylinder

Specifications

Model	6	10	16	20	25	32	40
Working Medium	Clean air(25μ filtration)						
Acting type	Double acting Single Acting:Normal Open/Close						
Max. pressure (Bar)	7						
Max. working pressure (Bar)	Double acting	1.5	2				1
	Single acting	3	3.5				2.5
Min.Working Pressure	0.2						0.15
Medium Temperature	0~60°						
Max.acting frequency				±0.01			±0.02
Lubrication	Not required						
Magnet	Always have						
Thread size	M3x0.5			M3x0.8			

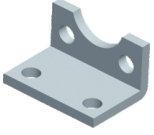
Cylinder Accessories

Cylinder Mountings

Cylinder


Model

- LB-32
- LB-40
- LB-50
- LB-63
- LB-80
- LB-100
- LB-125
- LB-160
- LB-200



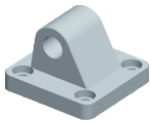
Model

- FA/FB-32
- FA/FB-40
- FA/FB-50
- FA/FB-63
- FA/FB-80
- FA/FB-100
- FA/FB-125
- FA/FB-160
- FA/FB-200




Model

- CA-32
- CA-40
- CA-50
- CA-63
- CA-80
- CA-100
- CA-125
- CA-160
- VCA-200




Model

- CB-32
- CB-40
- CB-50
- CB-63
- CB-80
- CB-100
- CB-125
- CB-160
- CB-200




Model

- TC-32
- TC-40
- TC-50
- TC-63
- TC-80
- TC-100




Model

- TC-M-32
- TC-M-40
- TC-M-50
- TC-M-63
- TC-M-80
- TC-M-100




Model

- CR-32
- CR-40
- CR-50
- CR-63
- CR-80
- CR-100
- CR-125
- CR-160
- CR-200



Model

- ILB-16
- ILB-20
- ILB-25




Model

- ISDB-16
- ISDB-20
- ISDB-25



Model

- IFA-16
- IFA-20
- IFA-25




Note: You should point out which type cylinders are those mountings applied for.
For example SC/SU/DNC/MAL/ARC etc.

Rod End Fitting


Model

- Y-32
- Y-40
- Y-50
- Y-63
- Y-80
- Y-100
- Y-125
- Y-160
- Y-200




Model

- YC-32
- YC-40
- YC-50
- YC-63
- YC-80
- YC-100




Model

- I-32
- I-40
- I-50
- I-63
- I-80
- I-100
- I-125
- I-160
- I-200




Model

- F-32
- F-40
- F-50
- F-63
- F-80
- F-100
- F-125
- F-160
- F-200



Model

- B-32
- B-40
- B-50
- B-63
- B-80
- B-100
- B-125
- B-160
- B-200





Airkert
Fluids drive automation

Cylinder Accessories

Magnetic Switch

Cylinder

Photo	Type	For Cylinder
	CS1-F/U	

Photo	Type	For Cylinder
	CS1-U/F	

Photo	Type	For Cylinder
	CS1-M	

Photo	Type	For Cylinder
	CS1-S	

Photo	Type	For Cylinder
	CS1-J	

Photo	Type	For Cylinder
	CS1-H	

Photo	Type	For Cylinder
	CS1-G	

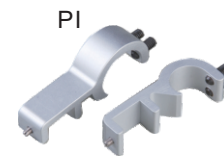
Photo	Type	For Cylinder
	CS1-L	



PAC



PM



PI

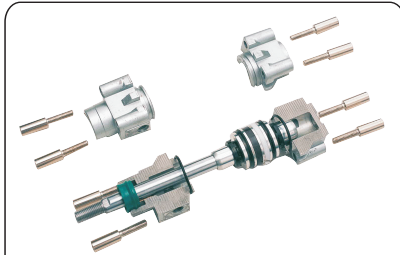
PAC/PM is designed for Tie rod cylinder. Thereinto PAC bore size is from 32-125 while PM is 32-150.

PI is designed for Micky mouse type ISO profile cylinder

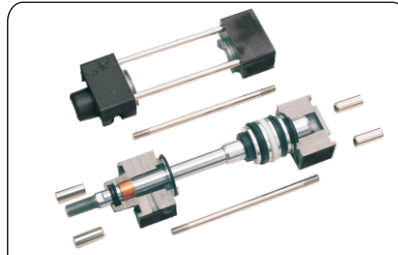


Cylinder Accessories

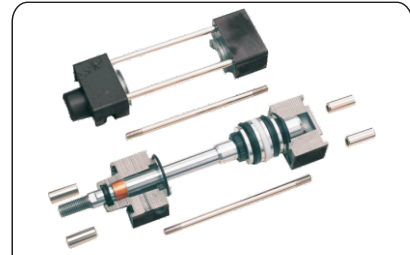
Full Sets Kits



DNC(ISO6431&VDMA24562)
Bore size:Φ32,Φ40,Φ50,Φ63,
Φ80,Φ100,Φ125



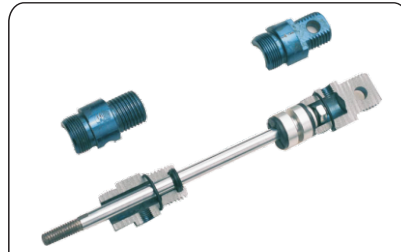
SI(ISO6431)
Bore size:Φ32,Φ40,Φ50,Φ63,
Φ80,Φ100,Φ125,Φ160,Φ200



SC
Bore size:Φ32,Φ40,Φ50,Φ63,
Φ80,Φ100,Φ125,Φ160,Φ200



MI(ISO6432)
Bore size:Φ12,Φ16,Φ20,Φ25



MAL
Bore Side:Φ 16, Φ 20,
Φ 25, Φ 32, Φ 40

Barrel and Tube



DNC Aluminum Tube
Bore size:Φ32,Φ40,Φ50,Φ63,
Φ80,Φ100,Φ125



SC Aluminum Tube
Bore size:Φ32,Φ40,Φ50,Φ63,Φ80,
Φ100,Φ125,Φ160,Φ200



SI Aluminum Tube
Bore size:Φ32,Φ40,Φ50,Φ63,
Φ80,Φ100,Φ125,Φ160,Φ200



MA/MI (ISO6432)
Stainless Steel Tube
Bore size:Φ16,Φ20,Φ25,Φ32,
Φ40



MALI Aluminum Tube
Bore size:Φ16,Φ20,Φ25,Φ32,
Φ40



Piston Rod(45# Steel Chrome-plated)
Bore size:Φ4-Φ80